



GRASSE MANO MORBIDA

Grasse Mano Morbida is a dense textile with a soft drape and natural touch, matched in colours with semi transparent Nizza Mano Morbida.

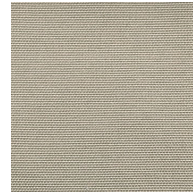
This fabric is suitable when fire safety, ease of care and colour durability are priorities.

Please be aware that screen colours, printer colours and fabric dye batches may vary.

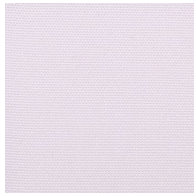
ARTICLE:	Grasse
BINDING:	Dobby
DYEING:	Piece dyed
MAIN USE:	Curtain
NUMBER OF COLOURS:	9
COMPOSITION:	100% Trevira CS
FINISH:	Soft wash
WIDTH:	325 cm
WEIGHT:	280 gr/m ²
SHRINKAGE AFTER WASHING:	Warp 2,5% weft 0,5%
COLOUR FASTNESS TO ARTIFICIAL LIGHT:	5-6
COLOUR FASTNESS TO WASHING:	4-5
FLAME RETARDANT:	Yes
SOUND ABSORPTION:	ISO 11564: 0,60 / Class C
ENVIRONMENT:	Produced in Italy. Complies with REACH regulation.
CARE:	

Technical specifications are subject to change without prior notice, updated results are available on www.astrid.se

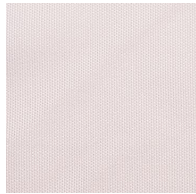
GRASSE MANO MORBIDA



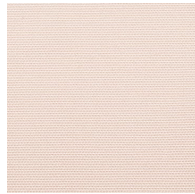
4240



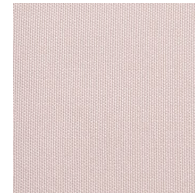
1110



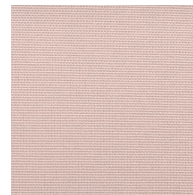
1155



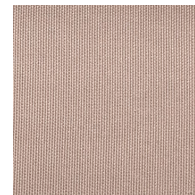
1550



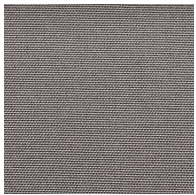
2130



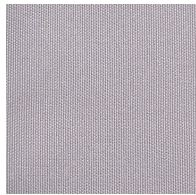
3316



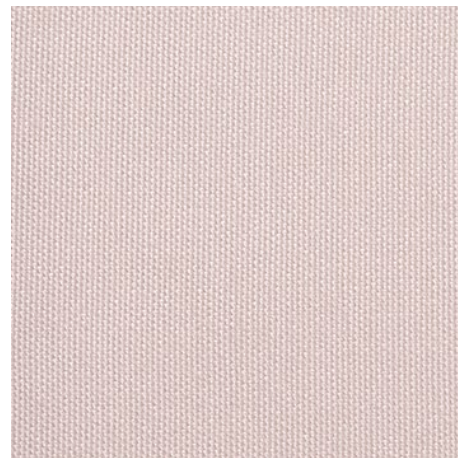
3281



9229



2712



1:1