



MILANO

Milano is a patterned version of Valle, a very soft and dense wool satin on double width, with a matte and smooth surface and a fantastic drape, it becomes very elegant as curtains. The jacquard woven squares create a pattern that appears on both sides thus making it a two-faced fabric where one side gets a stronger colour and the other side gets inverted giving it a lighter tone. Fits just as well with a classic pleat band solution as on a wave system.

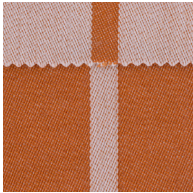
Use the width of the fabric as the width of the curtain for best results. This article will stretch and/or contract depending on humidity, dryness and the natural character of the wool fiber.

Please be aware that screen colours, printer colours and fabric dye batches may vary.

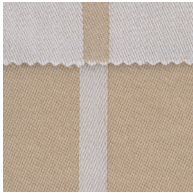
ARTICLE:	Milano
BINDING:	Satin
DYEING:	Yarn dyed
MAIN USE:	Curtain
NUMBER OF COLOURS:	3
COMPOSITION:	100% Virgin wool
WIDTH:	285–295 cm
PATTERN REPEAT:	↕ 36,5 cm ↔ 30,5 cm
WEIGHT:	202 gr/m ²
SHRINKAGE AFTER WASHING:	Warp: +1,5% Weft: +3%
COLOUR FASTNESS TO ARTIFICIAL LIGHT:	4/5
COLOUR FASTNESS TO WASHING:	4
FLAME RETARDANT:	No
ENVIRONMENT:	Produced in Italy with muelsing free wool. Complies with REACH regulation and Oeko-Tex.
CARE:	

Technical specifications are subject to change without prior notice, updated results are available on www.astrid.se

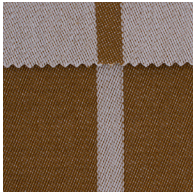
MILANO



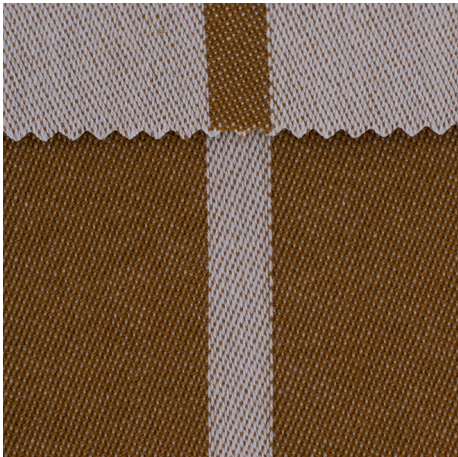
6852



3655



8556



1:1