



MODENA MANO MORBIDA

Modena Mano Morbida is a double-woven strong fabric in linen and cotton with a width of 315 cm. With a matt surface and a good stability, it is perfect for bedspreads with weight but also for pillows and other decoration.

Iron on the reverse to return to original size after washing. The stripes run straight across the width.

Please be aware that screen colours, printer colours and fabric dye batches may vary.

ARTICLE:	Modena Mano Morbida
DYEING:	Yarn dyed
MAIN USE:	Decoration, bedspread
NUMBER OF COLOURS:	14
COMPOSITION:	80% Cotton 20% Linen
FINISH:	Soft wash
WIDTH:	315 cm
WEIGHT:	587 gr/m2
SHRINKAGE AFTER WASHING:	Warp 5% Weft 1%
COLOUR FASTNESS TO ARTIFICIAL LIGHT:	4
COLOUR FASTNESS TO WASHING:	5
FLAME RETARDANT:	No
ENVIRONMENT:	Produced in Italy. Complies with REACH regulation and
CARE:	Oeko-Tex.



Iron on the reverse to return to original size after washing

Technical specifications are subject to change without prior notice, updated results are available on www.astrid.se

MODENA MANO MORBIDA



3132



5230



3930



6333



6025



6132



1:1



3243



4949



1520



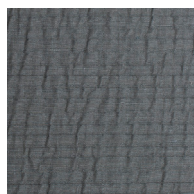
2130



2324



9868



7579



7992